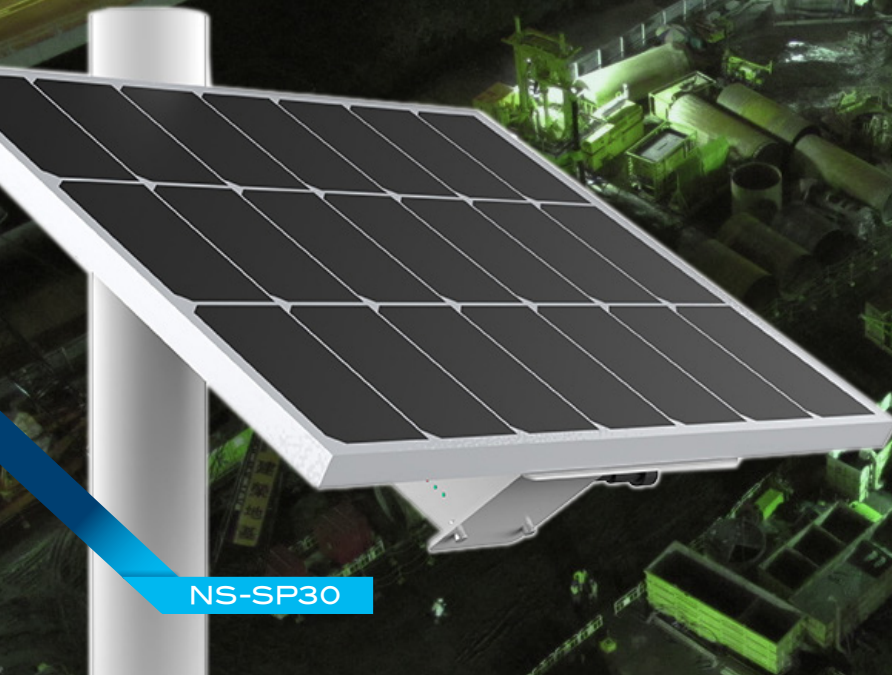


# SOLAR SECURITY



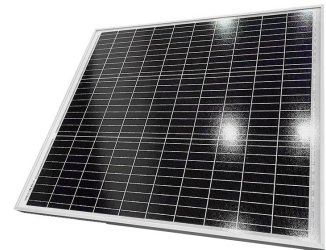
NS-SP30



NS-BP10



NS-BP30



NS-SP30

## Night Sabre solar security lighting allows protection and safety for sites where constant mains power isn't always available.

A managed Li-ion battery pack is charged by a single 60w solar panel or mains charger and is capable of running up to 10 Night Sabre lights over 100m of low-voltage cable.

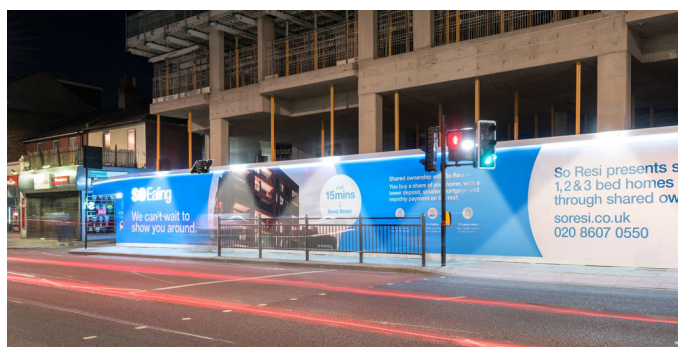
- Waterproof 30Ah battery pack with integrated optimisation and smart charge management
- Easy deployment on buildings and perimeters, pole or wall mounted solar panel
- Choice of Night Sabre lights to use; NS-60W, NS-45S or NS-30VR vandal resistant
- Up to 8 lights supported for simultaneous illumination only 10w each
- Off grid buildings, remote sites, fallow areas and building sites among many other applications
- BP10 provides redundancy for lighting in case of power loss, running 8 lights for a continuous hour

	NS-BP10	NS-BP30	NS-SP30
Description	10Ah Enclosed Battery Pack and Charger	30Ah Enclosed Battery Pack in weatherproof case	60W Solar Panel and 30Ah Battery Pack
Power	230VAC input 13vDC output 10A	12.8VDC output	4.2A at Pmax
Dimensions	240 x 168 x 92mm	240x168x92mm	550 x 580 x 30mm
Type	Lifepo4 Lithium Ion	Lifepo4 Lithium Ion	Monocrystalline Silicon
Max Number of 12v Lights	8 @ 10w each	10 @ 10w each	8 @ 10w each
Weatherproof	Internal Mounting	IP-67	IP-67
Accessories	4x Weatherproof connector boxes	4x Weatherproof connector boxes	Pole mounting kit, 4x Weatherproof connector boxes, wall bracket
Features	Tamper alarm enclosure, smart BMS controller, LED display	Smart BMS Controller, LED Display	Battery mounted in Solar Panel bracket
MSRP	£150.00	£375.00	£395.00



## Perimeter Intrusion Detection Systems

- Motion based lighting deterrent
- Waterproof 30Ah battery pack
- No additional requirement for power - PIDs controller trickle charges battery
- Up to 10 lights supported per battery - 100m cable run
- Blue Alarm strobe of multiple lights on alarm
- PIDs controller connects to alarm circuit locally



## Construction Site Lighting

- Motion based lighting deterrent
- Solar Panel with integrated battery pack
- Off-grid lighting and security
- Up to 8 lights supported per panel - 100m cable run
- Option for Blue Alarm strobe on alarm
- Low voltage installation - no mains power



## Battery Supported Security Lighting

- Battery backup in case of power cut
- Suggests property still powered and secured
- Up to 8 lights supported per battery
- Option for Blue Alarm strobe on alarm
- Low voltage installation - no mains power
- Can be solar powered or trickle-charged